

APPENDIX A **MIDDLE SMITHFIELD TOWNSHIP ZONING MAP** OF MONROE COUNTY, PENNSYLVANIA

LEGEND

Zoning Districts

- CON - Conservation
- RR - Rural Reserve
- R1 - Residential
- R2 - Residential
- R3 - Residential
- C1 - Commercial
- C2 - Commercial
- I - Commercial Industrial
- PRD - Planned Residential Dev.

- Tax Parcels
- Lakes & Ponds
- Rivers & Streams
- Road Centerlines
- County Boundary
- Municipal Boundary

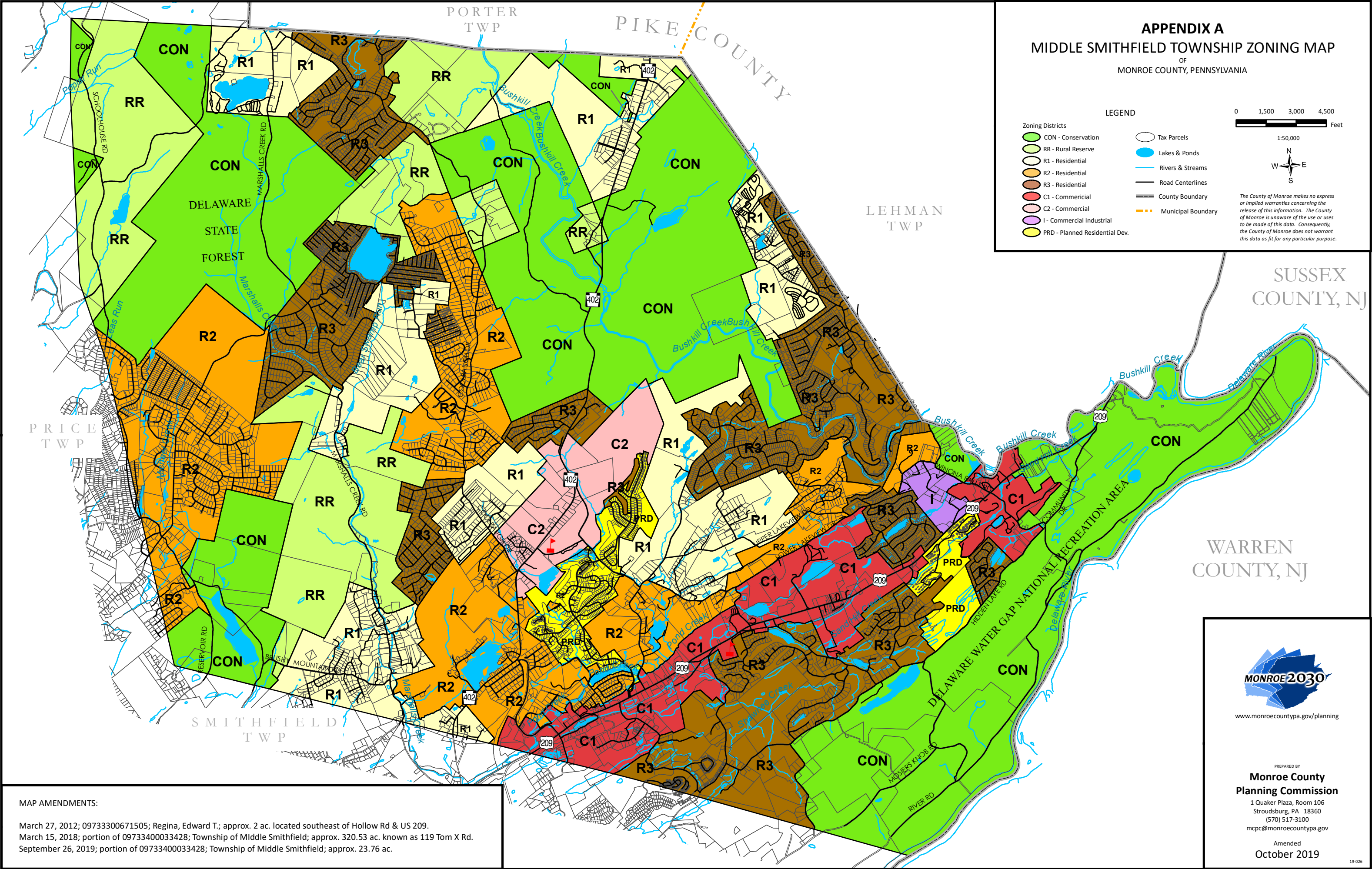
0 1,500 3,000 4,500

Feet

1:50,000

N
W E
S

The County of Monroe makes no express or implied warranties concerning the release of this information. The County of Monroe is unaware of the use or uses to be made of this data. Consequently, the County of Monroe does not warrant this data as fit for any particular purpose.



MAP AMENDMENTS:

March 27, 2012; 09733300671505; Regina, Edward T.; approx. 2 ac. located southeast of Hollow Rd & US 209.

March 15, 2018; portion of 09733400033428; Township of Middle Smithfield; approx. 320.53 ac. known as 119 Tom X Rd.

September 26, 2019; portion of 09733400033428; Township of Middle Smithfield; approx. 23.76 ac.



www.monroecountypa.gov/planning

PREPARED BY
**Monroe County
 Planning Commission**
 1 Quaker Plaza, Room 106
 Stroudsburg, PA 18360
 (570) 517-3100
mcpc@monroecountypa.gov

Amended
 October 2019